

CD Tray

Audio Compact Disc Player and Disc Library for Windows
Version 3.03



Copyright 1993 Jenjen Software, All Rights Reserved

Specifications

[Program Description, Features, System Requirements](#)

A Look at the Compact Disc Players

[The Main Player](#)

[The Face Plate Player](#)

[The Button Bar Player](#)

Program Operation

[Using CD Tray...](#)

[Using the Disc Library...](#)

Other Information

[CD-ROM Setup for CD Audio in Windows](#)

[Miscellaneous...](#)

Registration of CD Tray

[Registration Information](#)

[Benefits, Additional Programs...](#)

[CD Tray Order Form](#)

CD Tray Description

CD Tray is an audio compact disc player with a fully-integrated audio compact disc database.

CD Player with Disc Recognition

CD Tray turns your CD-ROM drive into a powerful compact disc music player while also storing all the information about your compact disc library into a categorized and sorted database. Simply enter and save the disc's Artist, Title and Song Titles the first time the disc is played. The next time the disc is inserted into the CD-ROM player, CD Tray will recognize the disc and display the information automatically.

Integrated Database with Powerful Database Tools

CD Tray's integrated database provides powerful yet easy to use tools for manipulating and viewing the discs in your library. Other information can be saved for each disc which provides the capability of a very organized library of audio compact discs.

Three Players in One

CD Tray can be switched among three different player configurations. All three players are fully integrated and may be switched from one to another with a mouse click or two. All current playing functions and counters are preserved when switching among the three players. Having access to three players adds more functionality and convenience in controlling an audio disc while working in Windows.

[Features of CD Tray...](#)

[System Requirements](#)

[What CD Tray's Users say](#)

Features of CD Tray

CD Tray is designed and looks much like a real compact disc player, making it easy to use. CD Tray supports up to 99 songs on a CD which is the Redbook standard. CD Tray provides all the features of an audiophile compact disc player; but, being computer driven, can also provide more sophisticated features, such as:

- **Three Compact Disc Players in One Multimedia Program**
CD Tray provides maximum flexibility when playing compact discs by providing a choice of three players to use. For control of all functions, use the Main player. The Main player is completely sizeable window and CD Tray components resize themselves appropriately to size of the Main player. To have control of the music while working in other applications and to save valuable Windows screen real estate, "shrink" the player to the Face Plate player or Button Bar player. The Face Plate player resembles a rack-mounted compact disc player, while the Button Bar player is a small window containing only the Play Control buttons. The Button Bar has an on-call Play Status window to keep in touch with the disc's Artist, Title and the current Song as well as the Digital Counters for getting current playing positions. Both shrunk players can also be made to 'stay on top' of other Windows applications and all of the players show up at the same position on your screen each time.
- **Compact Disc Recognition from CD Tray Disc Library**
Enter the compact disc's Artist, Title and Song Titles the first time the disc is played. CD Tray "remembers" the information, displaying it in the Artist/Title window and Songs window the next time you play that disc.
- **Categorized, Multi-Indexed Audio Compact Disc Database**
In addition to playing compact discs, CD Tray stores information about your compact discs in a computer database, the Disc Library. CD Tray provides powerful database tools for categorizing, editing, filtering, searching, sorting, reporting, printing, and browsing your Disc Library. The database also stores other information about each of your compact discs including Purchase Information, Purchase Date and Cost, Catalog and Collection Numbers, Release Label and Year, a Disc Description, and Digital or Analog recording type. CD Tray even includes a rating system so that you can give each of your discs a rating. You can then sort your discs by the rating and determine which of the discs in your library are rated higher or lower.
- **Configurable Disc Browser**
At the heart of CD Tray's integrated database tools is the Disc Browsing window. This window displays a list of all of the discs in your disc library. The Disc Browser may be configured with your choice of display fonts and includes adjustable column widths. The Disc Browser is also equipped with its own Speedbar for easy access to CD Tray's sorting, filtering, searching and printing functions. Double-clicking on a listed disc with the left mouse button displays the Disc Editing dialog so you may enter other information about that disc. Clicking the right mouse button on a listed disc displays a quick list of song titles for that disc.
- **WYSIWYG Printing with Print Preview**
CD Tray can print professional quality reports of your Disc Library. CD Tray provides different output formats which you can choose from. You also have the choice of fonts and how the discs are sorted and filtered. You can see what the printed report will look like before printing by using Print Preview. This displays a true rendering of the report on your screen using your selection of fonts before you print. Note, that the registered version of CD Tray includes more printing formats to choose from.

- **Disc Library Text Search**

CD Tray provides a powerful text searching engine for finding text patterns in your Disc Library. For example, you could search for the word 'LOVE' in all of your song titles and CD Tray will display a list of all of your discs and the corresponding songs with the word 'LOVE' in the song title. Too many 'love' songs? Then narrow the search criteria, by providing some artist text search criteria as well. For example, supplying 'BEAT' as artist text search criteria, and the text search engine will find all 'BEATLES' songs with the word 'LOVE' in the song title. After listing the discs, you can also click on the discs that are found and edit any of the information for that disc.

- **Volume Control**

CD Tray provides its own volume control dialog for controlling the volume of your sound card and speakers. Not only does CD Tray provide the capability of adjusting your CD-ROM volume, but goes one step further and provides adjusting controls for all of your computer's auxiliary (AUX) devices. Of course, your computer must be equipped with a sound card before this feature can be used.

- **Multi-Track Programming**

The Programming and Review Program tools are designed for precise control of a track program. Using the Programming Tool, creating a track program is as easy as double-clicking the tracks you want to play. The Review Program tool then lists the tracks programmed, shows the current track being played from the program and displays real-time digital counters of the program's duration, elapsed and remaining times. These tools are indispensable for making tapes of your compact discs. A favorite program may also be saved and recalled for each disc in the Disc Library. You can play just the songs you want each time without having to re-program CD Tray. CD Tray uses Windows' Multimedia Timer Services for extremely precise control of the track program.

- **Fast Forward / Rewind / Cueing**

An easy-to-use tool is provided to fast forward, rewind or cue to a certain position in a song. Using the digital readout of the track time displayed on the tool, clicking and holding the mouse button on the tool's scroll bar will set the play position. If CD Tray is currently playing, CD Tray will skip to the selected position and resume playing. If stopped, CD Tray is cued to that position and pressing the Play Control starts play at that cued position. Fast Forward / Rewind / Cueing Tool

- **Segment Play**

The Segment Play tool is used to select and play a segment of a track. Select the start and ending positions, click the Go! button and CD Tray plays the segment and stops. Play the segment as many times as desired or choose a different segment. The segments can be any size from one second to the length of the track. Designed primarily to be used as an aid in recording Windows .WAV audio files, the Segment Play tool can also be mildly entertaining.

- **Shuffle Play, Disc Repeat, Track Repeat, Restart Track, Bidirectional Track Time**

Like a real CD player, CD Tray features Shuffle Play for playing tracks in a random order. Shuffling the tracks is accomplished using the Programming Tool which can be used to shuffle the tracks as many times as desired until the final selection is made for the shuffled program. Also provided on CD Tray's menu, are Disc / Track Repeat options as well as an option to Restart the current track. The digital counter display which indicates Track Time may be set to increment or decrement as the track plays at the click of a button.

- **User-Defined Color Configuration and Color Schemes**

CD Tray permits changing its different component colors to many different color schemes using the Colors dialog. You can also save your favorite color schemes and load them quickly by selecting from a list of your saved color schemes.

- **Configure CD Tray as a Complete Multimedia System**

Make CD Tray the focal point of your computer's multimedia audio system by executing other multimedia programs from CD Tray. CD Tray has the capability to add programs to its menu that you may select from as desired. If your computer includes a sound card, you may add your mixers, recorders, WAV players and so forth for easy access. Actually, any program you wish to have access to while using CD Tray may be added. Examples might be Windows' Calendar or NotePad programs. For easier access, CD Tray also includes Mixer and Recorder buttons on the SpeedBar for executing your sound card's mixer program and an audio recorder such as Windows' Sound Recorder.

- **SpeedBar**

For speedy access to certain tools and functions, CD Tray includes a SpeedBar. The SpeedBar is a collection of buttons that execute certain commonly used functions in CD Tray. All three of the players in CD Tray have their own set of SpeedBar buttons. The Disc Library Browsing window also has its own SpeedBar for easy access to certain database tools.

- **Graphics Windows**

Included with CD Tray is a collection of simple animated graphics windows which may be viewed while listening to music. These windows serve no purpose other than amusement and promoting relaxation.

Registration Benefits, Additional Programs...

CD Tray System Requirements

Minimum System Requirements

80386 (or higher) processor

4 MB RAM

Microsoft Windows 3.1 or higher

CD-ROM drive

Headphones

VGA video graphics

2.4 MB free hard disk space (more space is used as discs are added to Disc Library)

Recommended Hardware

Sound Board

External Speakers

Printer

See Also:

[CD-ROM Setup for CD Audio in Windows](#)

Comments from CD Tray's Users

Prior versions of CD Tray are in use all over the world. CD Tray users have said they've *"tried the rest and CD Tray is the best."* CD Tray's "Jukebox-like" interface makes for an extremely simple to use CD Audio program. Most users know how to use CD Tray's controls and features intuitively - but all the documentation is there just the same in a thorough and easy to read help file. CD Tray is being used by professionals such as radio disc jockeys and multimedia authors.

With version 3.03, CD Tray once again sets the standard for Windows CD Audio software. Many prior users have made comments about the features they would like to see in CD Tray. Some of these "wishes" are... A sizeable player, a volume control, better printing, fonts, color control, and an extended disc record format. With version 3.03, these wishes are now available.

CD Tray has the most extensive database capabilities of any CD Audio player available. It also completely supports the Redbook CD Audio compact disc standard of up to 99 tracks per disc.

Some users have said this about CD Tray...

From a user in Germany... *"CD Tray is Famous!"*

From a Chicago Radio Music Director... *"If you're a Music Director in the 'Radio Biz,' you owe it to yourself to check out JenJen Software's Audio Compact Disc Player & Compact Disc Library. It's not only an expansive data program utilized to store necessary information from your station's entire CD music library, but it can be used for instant playback as well. If you need to recall pertinent CD information or listen to a specific track from that 'new' release one more time, a simple stroke of a key or click of a mouse button gets the job done quickly. If you're a PD or MD and a Windows freak with CD-Rom, 'CD Tray' is definitely worth looking into."*

From a U.S. user... *"I was looking for a reliable Windows Audio CD program. CD Tray is it!"*

From a user in Switzerland... *"CD Tray's database tools are very powerful - yet easy to use. I've been able to organize my audio discs very effectively."*

From a user in England... *"An excellent, professionally produced product which will undoubtedly help me to improve my CD Audio database arrangement while at the same time increasing and extending the range and variety of disc playing capability."*

Other Users' Comments...

"This is the program I've been looking for for months!"

"After one two-minute test, I deleted my commercial CD player and registered CD Tray!"

"Wonderful User Interface!"

Super!...Wonderful!...Great Looking!...Better than any other player I've seen!...Beautiful!



CD Tray
Audio Compact Disc Player & Compact Disc Library

Version 3.03



Copyright 1993

All Rights Reserved

The Main Player



[Click a player component for more information](#)

This window can be resized to your personal preference or maximized to full screen.

The Face Plate Player



Click a player component for more information

The Button Bar Player and Play Status window



Click a player component for more information

Switching Among the Three Players

CD Tray can be transformed among three different player configurations. All three players are fully integrated and may be switched from one to another with a mouse click or two. All current playing functions and counters are preserved when switching among the three players.

For lack of better terminology, switching from the Main Player to one of the smaller players, the Face Plate player and the Button Bar player, is called "shrinking".

From the Main Player you may shrink to a smaller player by choosing the player from the Shrink Menu. Also from this menu, you may execute a dialog to select certain Shrink Options.

You also may choose a player from the SpeedBar:



Shrink to the Face Plate player.



Shrink to the Button Bar player.

To switch from one of the shrunk players to the other, click the player's control menu box. From this menu, for example:



the alternative shrunk player will be listed. Select this item on the menu and CD Tray will switch to that player. Also, you will notice that you may toggle the "Always On Top" status of the player from this menu.

To switch back to the Main Player, a button is provided along side the shrunk player's playing controls:



Click this button to switch to CD Tray's Main Player.

Using CD Tray



- [Controls](#)
- [Digital Displays](#)
- [Artist/Title Window](#)
- [Songs Window](#)
- [Menu Commands](#)
- [Track Programming](#)
- [Saving and Recalling a Track Program](#)
- [Fast Forward / Rewind / Cueing Tool](#)
- [Segment Play Tool](#)
- [Speed Bar](#)
- [Elapsed Disc Time Graph](#)
- [Volume Control](#)
- [Mixer and Recorder Execution](#)
- [Executing Other Programs From CD Tray](#)
- [Keyboard Play Control](#)
- [Shrink Options](#)
- [Switching Among the Three Players](#)
- [Graphics Windows](#)

Controls

These controls are used to control the audio playing functions of the CD-ROM. They are duplicated on all three CD Tray players.

Depending on the state of CD Tray, these buttons will sometimes be disabled. When disabled, the buttons are dimmed.



[Click a control for more information...](#)

The two shrunk players have additional controls:



This button will switch from the currently shrunk player back to the Main Player. Both shrunk players have this control button.



This button is only on the Button Bar player. This button executes the Play Status window which displays current disc information as well as all of the digital displays in a small, compact window. If the Play Status window is already open, this button is disabled.

By keeping the mouse cursor over the button for a second, a button tip will be displayed presenting help on the button's function. These tips can be turned off via the Options menu.

Play the compact disc loaded in your CD-ROM drive.

This control is disabled if the CD-ROM is currently playing or if there is no disc in the CD-ROM drive.

Stop playing the compact disc in your CD-ROM drive.

This control is disabled if the CD-ROM is currently stopped or if there is no disc in the CD-ROM drive.

Pause or Resume playing the compact disc in the CD-ROM drive.

If CD Tray is paused, clicking this control will resume play. This control is disabled if the CD-ROM is currently stopped or if there is no disc in the CD-ROM drive.

Skip LEFT to previous track.

If CD Tray is currently playing, the previous track will start playing. If CD Tray is stopped the previous track will be cued for playing.

If CD Tray is in Program Mode the previous track that is programmed will be played or cued.

Skip RIGHT to next track.

If CD Tray is currently playing, the next track will start playing. If CD Tray is stopped the next track will be cued for playing.

If CD Tray is in Program Mode the next track that is programmed will be played or cued.

Eject the compact disc from the CD-ROM drive.

This control is disabled if the CD-ROM is currently playing or there is no disc in the CD-ROM drive.

Note:

The Eject button on your CD-ROM drive will still eject the disc while playing and CD Tray will try to recover gracefully when this happens. However, it is best to use the Eject button on CD Tray so it knows all about what's going on with your CD-ROM drive and can update itself accordingly.

Switch from the current shrunk player back to the Main player

Displays the CD Tray About dialog. This dialog displays CD Tray's version and copyright information. Also displayed is current Windows system information.


The duration of the current track playing or cued.

The Track Title for the song playing or cued.

The Artist for the current disc in the CD-ROM.

The Title of the current disc in the CD-ROM.

Closes the Play Status window.

The Play Status window can be recalled by clicking  on the Button Bar player.

This button executes the Play Status window.

Cueing

Positioning the read mechanism (lens) of the CD-ROM drive to a certain position on the compact disc. When play starts, it starts at the cued position.

Program Mode

CD Tray playing mode in which you choose the particular tracks you wish to play on the compact disc.

You may choose as many or as few tracks as you wish and in any order or you may shuffle the tracks in a random order.

After CD Tray enters Program Mode, the Review Program tool will appear to display the programmed tracks and current track as well as the duration, remaining and elapsed times for the chosen program.

Control

A Control is one of the large buttons on CD Tray. These buttons control operation of the player for Playing, Stopping, Pausing etc.

These buttons are duplicated in all three CD Tray players and also on the menu of the Main Player.

In addition, playing function may be controlled via the keyboard using Ctrl-key combinations. The keys are:

- Ctrl-P --> Play
- Ctrl-S --> Stop
- Ctrl-U --> Pause
- Ctrl-M --> Resume
- Ctrl-X --> Skip to Next Track
- Ctrl-V --> Skip to Previous Track
- Ctrl-J --> Eject disc from the CD-ROM drive

These keys work with all three CD Tray players.

Time Format

The time format used by CD Tray for digital counters.

The format is a minutes, seconds format:
minutes:seconds (mm:ss)

Database Filter

To Filter a database means a field is chosen from the database record for filtering. Some criteria is given about that field and only records that match that criteria are listed.

For example, filtering CD Tray's Disc Library by the musical category 'Classic Rock' will list only those discs in the database that have been categorized with the category 'Classic Rock'.

Fast Forward

Move the playing position of the CD-ROM lens forward to a new track position without delay.

Rewind

Reverse the playing position of the CD-ROM lens to a previous track position without delay.

Disc Library

The Disc Library is a database of all your audio compact discs.

The files are CDTRAY.DAT & CDTRAY.IXC.

The .DAT file is the data file and the .IXC file is the index file. Both are necessary to run CD Tray and both must be in the directory specified by the entry "DbDirectory=" in the CDTRAY.INI configuration file. (CDTRAY.INI is located in the Windows default directory, ie. "C:\WINDOWS".)

The files are created the first time CD Tray is run. The "DbDirectory=" entry will initially be set to the directory specified in CD Tray's install program so that the database files will be located in the same directory as the CD Tray program files.

See Also:

[Rebuilding the Disc Library Index](#)

CDTRAY.INI

A configuration file for CD Tray.

This file is where certain program options are set so they will be reset again each time CD Tray is run.

Music Category

A user-defined group of discs.

Examples of categories would be Classic Rock, Jazz, Classical, etc. CD Tray allows grouping of discs in this way so as to categorize the Disc Library. This greatly enhances database filtering and sorting.

Sorted Order

The sorted order specifies a field that controls the alphabetic order that compact disc records will be listed.

For example, sorting by the Artist field might make **A**lan Parsons Project the first record and **Z**Z Top the last.

Red Book Audio

The digitized audio format used by commercial audio compact discs. The 16-bit 44.1 KHz data that conforms to this format can be stored only on compact discs.

CD-ROM

Compact Disc - Read Only Memory.

A CD-ROM drive is a high-capacity storage device that can store up to 600 MB of data; it does not permit a user to save information, but only to read stored data. CD-ROM drives conform to the Red Book Audio format which allows them to also play audio compact discs.

Track Program

A list of tracks to be played by CD Tray that have been selected using the Track Programming tool.

A track program can be saved, after programming is completed using the Save Program menu item in the Disc Menu. The track program can be recalled by selecting Load Program menu item also in the Disc Menu.

Software Driver

A program that once executed, installs itself into the computer's memory and remains there ready to perform its function as necessary. These programs are usually initially loaded by including them in the computer's startup configuration files (CONFIG.SYS & AUTOEXEC.BAT) so that they are loaded when the computer is powered on. Other drivers, specific to Windows, are loaded when Windows is first started by including them in the Windows startup configuration files (WIN.INI & SYSTEM.INI). Software drivers that control devices, such as a CD-ROM or a printer are called device drivers.

MSCDEX.EXE

Microsoft CD-ROM EXtensions.

A DOS-level software device driver which allows MS-DOS to communicate with a CD-ROM drive. This driver is loaded in AUTOEXEC.BAT.

Setting Up MSCDEX.EXE

Setting up MSCDEX.EXE

As of Version 2.22 --> (MSCDEX.EXE 25377 03-10-93 6:00a):

Syntax

```
MSCDEX /D:driver [/D:driver2... ] [/E] [/K] [/S] [/V] [/L:letter]
[/M:number]
```

You should include the directory that holds MSCDEX.EXE in your PATH statement in AUTOEXEC.BAT.

Parameters

/D:driver1 [/D:driver2...]

Specifies the driver signature of the first CD-ROM device driver. The driver1 parameter must match the parameter specified by the /D switch on the CONFIG.SYS command that starts the corresponding CD-ROM device driver

The MSCDEX command must include at least one /D switch. To install additional CD-ROM device drivers, specify an additional /D switch for each device driver.

/E

Specifies that the CD-ROM driver be allowed to use expanded memory, if available, to store sector buffers.

/K

Specifies that MS-DOS should recognize CD-ROM volumes encoded in Kanji. By default, MS-DOS does not recognize Kanji CD-ROM volumes.

/S

Enables sharing of CD-ROM drives on MS-NET or Windows for Workgroups servers.

/V

Directs MSCDEX to display memory statistics when it starts.

/L:letter

Specifies the drive letter to assign to the first CD-ROM drive. If you have more than one CD-ROM drive, MS-DOS assigns additional CD-ROM drives subsequent available drive letters.

/M:number

Specifies the number of sector buffers.

Loading and enabling a single CD-ROM device driver and MSCDEX.EXE

This example shows the relevant CONFIG.SYS and AUTOEXEC.BAT commands for a computer with one CD-ROM drive.

The CONFIG.SYS file contains the following DEVICE command:

```
device=c:\devices\cdromdrv.sys /d:miscd000
```

This command loads the device driver CDROMDRV.SYS, which came with the CD-ROM drive. The AUTOEXEC.BAT file contains the following MSCDEX command:

```
c:\dos\mscdex /d:mscd000 /l:g
```

This command enables the device driver that has the driver signature MSCD000. The /E switch specifies that the driver be allowed to use expanded memory, if available. The /L:G switch assigns the drive letter G to the CD-ROM drive.

MCICDA.DRV

The Windows' MCI (Media Control Interface) CD Audio driver.

This driver is loaded from the entry in the [MCI] section of SYSTEM.INI.

The entry should read as: "CDAudio=mcicda.driv".

Setting up MCICDA.DRV

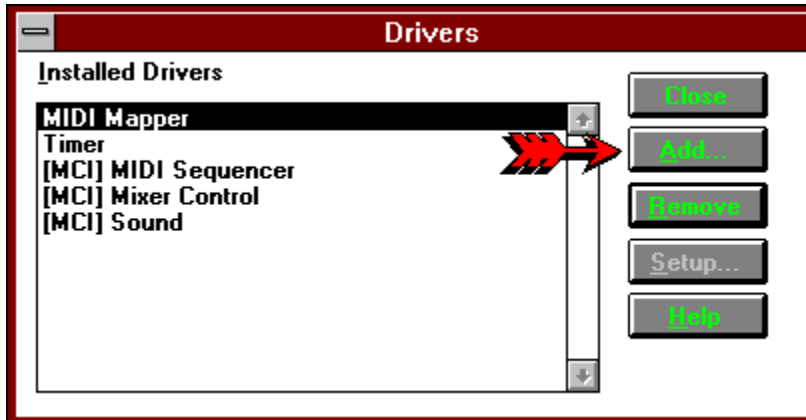
Setting Up MCICDA.DRV in Windows 3.1



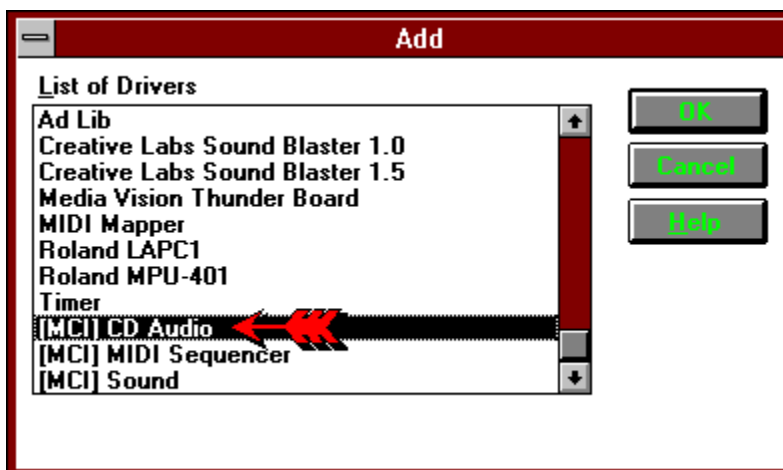
Start the Windows Control Panel



Choose the Drivers Icon.



From this dialog, choose ADD to add a driver to the system.



Select "[MCI] CD Audio", Click OK and confirm adding the driver.

Restart Windows

Always On Top

To make a window "Always On Top" means that the window will remain visible on the Windows' desktop even when deactivated.

Making a window "Always On Top" keeps the window or program readily available since it is always visible - even when working in other Windows applications.

Digital Displays

The digital displays show real-time counters for various playing times for the current compact disc in the CD-ROM drive. The Button Bar player's Play Status window duplicates all digital counter displays and the Face Plate player duplicates some of the displays.





[Click on the digital display for a description...](#)

Current track that CD Tray is playing or is ready to play.

The time remaining for the current track (counting down) or the time elapsed for the current track (counting up).

This display is bidirectional meaning that it can be set to:
increment from 00:00 to the length of the current track or
decrement from the length of the track to 00:00.

Toggling the display is controled by clicking the track time button:

-  Track Time is currently incrementing from 00:00 to the track length.
-  Track Time is currently decrementing from the track length to 00:00.

The track time button is duplicated on the Button Bar player's Play Status window and on the Face Plate player. This button's current setting is preserved between executions of CD Tray in CDTRAY.INI.

The elapsed amount of time that has played from the beginning of the compact disc. This display counts from 00:00 to the length of the disc.

Total number of tracks that are on this compact disc.

Total length of time this compact disc will play.

It is the sum of the lengths of all the tracks plus any extra time at the start, and at the end of the disc. These extra times vary between different discs.

Remaining time left to play on this compact disc.

This display counts down from the length of the disc to 00:00.

This is a status indicator that indicates what CD Tray is currently doing.

This display will indicate Play, Stop and Pause. It will be blank when no disc is inserted in the CD-ROM drive.

Toggles the bidirectional Track Time digital display.



Track Time is currently incrementing from 00:00 to the track length.



Track Time is currently decrementing from the track length to 00:00.

Click the button to toggle the direction.

Artist / Title Window

The Artist / Title Window contains only two edit fields. They are used to input the Artist's name and the Title of the compact disc. This information is saved in the disc's record in the Disc Library.

Entering Information

This information must be manually entered. **This information is not contained on an audio compact disc; it must be entered by the user.** When entering the Artist and Title information, press **Tab** to move the input focus between the two edit controls. Press **Shift-Tab** to move backwards. Press **Return** when you are done inputting the Artist and Title information. You may move to the first song in the Songs window by pressing **Ctrl-Tab**.

Saving Information

After inputting or editing information in this window, choose Save Disc Info from the Disc Menu to save your edits to the CD Library. CD Tray will prompt you if you forget.

You may also press the hot-key, **Ctrl-D**, to save the disc information to the Disc Library. After typing in the information, you must save the information into the Disc Library before that information will be displayed in CD Tray's various players and windows.

Note: You must input at least the Artist name before you can save the disc into the Disc Library.

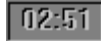
Songs Window

The Songs Window displays the song titles for the current disc in the CD-ROM player. The edit control containing the song currently playing, programmed or ready to play will be highlighted in red.

Song Titles

The titles are initially blank and you must input them from the song listing on the compact disc. **Song title information is not contained on an audio compact disc, it must be input manually.**

Track Lengths



Listed beside each song edit line, are the lengths of that corresponding track on the compact disc. You may note sometimes these track lengths may not match exactly any track lengths that are written on the compact disc. However, these are the track lengths that are stored on the compact disc by the publisher of the disc.

Track Play Buttons



To the far left of each song, are numbered Play buttons which you may click to play a song instantly. If CD Tray is currently playing, it will skip to that track. If CD Tray is stopped, that track will start playing. These buttons are disabled when CD Tray is in program mode.

Track Cueing Buttons



Next to each Track Play button is a corresponding Track Cueing button for each song. Clicking a cueing button will cause that track to be cued for play. Pressing the large Play button will start play at that track which is now cued. These buttons are only available when CD Tray is stopped. The buttons are especially handy for use in cueing a track and then executing the Segment Play tool.

Moving Around

A scroll bar is provided to scroll the window up or down to tracks not currently shown. The scroll bar will not be shown if the number of tracks on the disc is less than the number that could be displayed based on the size of the Main player. You may use the **Up/Down Arrows** and **PgUp/PgDown** to scroll through this window. Press **Ctrl-Home/Ctrl-End** to go to the top and bottom respectively. To conserve Windows memory and system resources, the Songs window uses a paging scheme for discs that have more than 33 tracks. For these discs, a maximum of 33 tracks will be listed at a time on each page. CD Tray makes it easy to switch between Song 'pages' by pressing **Ctrl-PgDn** and **Ctrl-PgUp** to switch between the pages. You may also switch between the pages by selecting the Songs' page from the Windows menu. There is a maximum of 3 pages for a disc with Page 1 listing songs 1-33, Page 2 listing songs 34-66 and Page 3 listing songs 67-99.

Entering Information

When entering track titles, pressing the **Tab** key will move the input focus to the next track's input entry control. Press **Shift-Tab** to move backwards. Press **Return** when you are done inputting track titles. This will erase the flashing caret within the song title edit controls.

Saving Information

After inputting the disc's information in this window, choose Save Disc Info from the Disc Menu to save the disc information in the Disc Library. CD Tray will prompt you if you forget before exiting.

You may also press the hot-key, **Ctrl-D**, to save the disc information to the Disc Library. After typing in the information, you must save the information into the Disc Library before that information will be displayed in CD Tray's various players and windows.

Component Colors

You may set the colors of the various Songs window interface components by choosing the colors in the Color Configuration dialog.

Songs Window Paging

Menu Commands

[Disc](#) [Control](#) [Tools](#) [Library](#) [Volume](#) [Shrink](#) [Window](#) [Options](#) [Help](#)

Click the menu item for more information.

Disc Menu

Disc	
S ave	Ctrl+D
E dit...	Ctrl+E
L oad Track Program	
S a ve Track Program	
E xit	

Click the menu item for a description of that item.

Save any changes made to the compact disc record.

You may also press the hot-key, **Ctrl-D**, to save the disc information to the Disc Library. After typing in the information, you must save the information into the Disc Library before that information will be displayed in CD Tray's various players and windows.

Displays the Edit Disc dialog to edit the various disc information for the current disc in the CD-ROM.

Load a saved program for this compact disc.

This item is disabled unless the current compact disc has a program that you have saved previously.

Upon loading a program, CD Tray will enter into program mode. Click the Play Control button to start the program playing.

Save the current track program.

This item is disabled unless CD Tray is in program mode.

Exit the program.

If any of the current disc's information has been edited and not saved, you will be prompted whether or not you wish to save it.

Control Menu

This submenu duplicates the playing control buttons on CD Tray's players. CD Tray provides keyboard control by using the hot-keys listed to the right of each menu item.

Control	
<u>P</u> lay	Ctrl+P
<u>S</u> top	Ctrl+S
<u>P</u> ause	Ctrl+U
<u>R</u> esume	Ctrl+M
<u>S</u> kip <u>P</u> re <u>y</u>	Ctrl+V
<u>S</u> kip <u>N</u> ext	Ctrl+X
<u>E</u> ject	Ctrl+J

Click the menu item for a description of that item.

Pause playing the compact disc in the CD-ROM drive.

This control is disabled if the CD-ROM is currently stopped or there is no disc in the CD-ROM drive.

Resume playing the compact disc in the CD-ROM drive.

This control is disabled if the CD-ROM is currently stopped or there is no disc in the CD-ROM drive.

Tools Menu

Tools	
<u>F</u> ast Fwd / Rewind / Cue... <u>S</u> egment Play... Track <u>P</u> rogramming...	
<u>R</u> estart Current Track <u>T</u> rack Repeat <u>D</u> isc Repeat	
<u>M</u>ore Tools	<u>C</u>alculator
	<u>N</u> otepad <u>C</u> ontrol Panel <u>A</u> dd a Tool... <u>D</u> elete a Tool...

Click the menu item for a description of that item.

Add a Tool to CD Tray's Menu

CD Tray allows adding Mixer and Recorder programs to CD Tray's Speedbar for quick execution from CD Tray. In addition, more programs may be added to CD Tray's Tools Menu for execution from CD Tray.

Adding a Tool allows you to specify the other tools or programs you wish to execute from CD Tray. You will specify the **name you wish to put on CD Tray's menu** and **the executable program name**.

Adding a Tool

The Add Tool dialog will initially be displayed. You can type in the information yourself or click the **Browse** button. This will present a file dialog that can be used to browse through the directories of your hard disk to find the executable (.EXE) file. Browsing for the program is easier than trying to remember the complete path to the program which you might get wrong. Likely candidates for some tools to add to CD Tray's Tools Menu are the Windows NotePad and Calendar applications. Any executable program may run from CD Tray in this manner.

Restrictions

You may add up to 5 programs to the user-defined menu.

Menu Names

Put an ampersand (&) in front of the letter of the menu item name to make it the hot key for the item. Be careful not to duplicate any other hot keys you have defined on this popup menu.

See Also

[Delete a Tool](#)

Delete a Tool from CD Tray's Menu

This dialog is used to delete any of the user-defined tools added to CD Tray's Tools menu. Select the tool from list, and click Ok to confirm.

See Also
[Add a Tool](#)

Selecting this menu item will restart the track currently playing from the beginning.
This item is disabled when CD Tray is stopped.

Select this item to make CD Tray play the current track continuously. When this menu item is checked, Track Repeat is enabled.

Select this item to make CD Tray play the current compact disc continuously. When this menu item is checked, Disc Repeat is enabled.

Reveals another popup menu with tools or programs you wish to execute from CD Tray.

An example of a user-defined tool.

Library Menu

Library		
Sort by	Artist	Ctrl+A
Filter by	Title	Ctrl+T
Text Search...	Music Category	Ctrl+C
Information...	Catalog Number	Ctrl+G
Print...	Collection Number	Ctrl+L
Import/Export...	Publishing Label	Ctrl+B
Browser	Purchase Date	Ctrl+S
	Release Year	Ctrl+Y
	Rating	Ctrl+R

Click the menu item for a description of that item.

Displays a popup menu with Disc Browser options such as the display font.

Volume Menu

V olume	
V olume Control...	Ctrl+Z
M ute	Ctrl+Q
D evice Info...	

Mutes (and Un-Mutes) the CD-ROM Auxiliary (AUX) device.

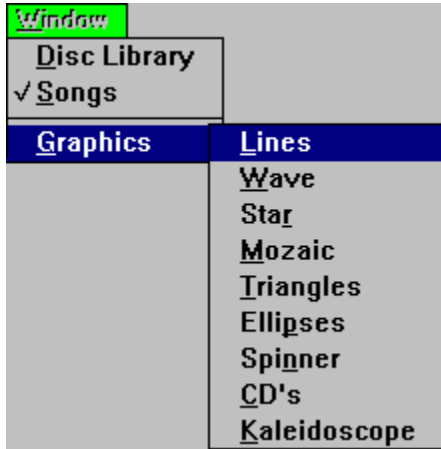
Turn the sound volume of the sound card all the way down to silence

Shrink Menu



Click the menu item for a description of that item.

Window Menu




Click the menu item for a description of that item.


The current window shown inside CD Tray will be checked.

Invokes the Disc Library Browsing window where you may browse and edit the discs in the Disc Library.

This also enables the Library Menu for access to Disc Library functions

Switching to this window may also be accomplished by clicking  on the SpeedBar.

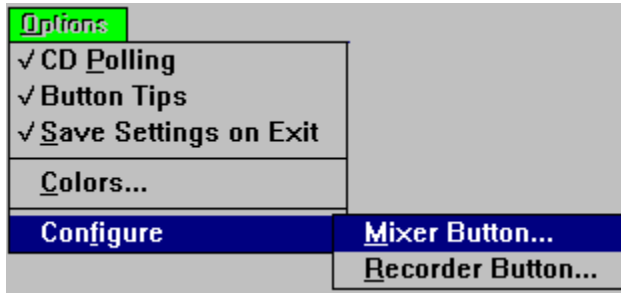
Invokes the Songs window where you may edit the song titles for the current disc and instantly play tracks on the current disc.

Switching to the Songs window may also be done by clicking  on the SpeedBar.

Displays a popup menu with a list of graphic windows to display.

Invoke an animated graphics window. These windows are for show only and just might make listening to music at your computer a little more relaxing.

Options Menu



Click the menu item for a description of that item.

CD Polling Option

CD Tray uses Windows' timer facilities for all updating of digital readouts, track highlighting and so forth. The CD-ROM drive is polled approximately once every second and returns the disc's playing information such as the disc's position, current track, and so forth. Unchecking the CD Polling menu item in the Options Menu will turn this polling off. Turning polling off can minimize the "stress" on Windows while using other applications and listening to music.

CD Polling is automatically turned off if CD Tray is minimized to an icon on the Windows desktop. Restoring CD Tray from minimization will cause CD Tray to re-update itself accordingly.

WARNING: Turning CD Polling off effectively disables CD Tray. CD Tray will not detect when a disc stops, a disc is ejected and other playing functions while CD Polling is off. Use with Care!

Saves window positions, fonts and other options when you quit CD Tray. When you restart CD Tray, these options are restored.

When checked the options are saved and when not checked the options are not saved.

Controls whether to display the small button tips when the mouse cursor is moved over a button. The button tips are to help new users of CD Tray understand what the button will do when clicked.

When checked the button tips are displayed and when not checked the button tips are not displayed.

Displays another popup menu from which you can configure certain CD Tray options.

Help Menu

From this menu you may invoke the Windows Help System to view CD Tray's help information.

The About window is also executed from this menu. The About window displays CD Tray program information as well as some information about the current state of the Windows operating system.

Track Programming

This dialog is used to program CD Tray. Programming means that individual tracks from the current compact disc can be selected to be played. The tracks can be selected in any order and as many or few as desired. A favorite track program can be saved, if desired. After a track program is created, the Review Program tool will appear listing the program and program time information.



This button on the Speedbar can also be used to execute this tool.

Dialog Appearance

When first displayed, all the songs will be listed in the 'Available' list box on the left. These tracks are available for programming. The 'Programmed' list box on the right, lists the tracks that are programmed. It is initially empty.

Above each list box the total time length of all the songs contained in the corresponding list box will be displayed. The programmed length will increase as tracks are programmed while the available length will be decreased by the same amount.

Programming

Programming CD Tray is easy. To select a track, click on the track title and then click the **Select** button. Alternately, you may double click the track title to do the same thing. This will move the track title from the 'Available' list box to the 'Programmed' list box. You also may remove a track from the 'Programmed' list back to the 'Available' list box by selecting the track and clicking the **Reject** button. Again, you may double click the track to accomplish the same thing.

Shuffle Play

If you wish to play the tracks in a random order, click the Shuffle button. This will move all of the tracks from the 'Available' list box to the 'Programmed' list box. You may click the Shuffle button as many times as desired to re-shuffle the tracks into a different order. After shuffling the tracks, tracks from the 'Programmed' list box may be removed as described above.

Starting the Program

After the tracks are programmed that you desire to play, click the **Done** button. This will launch CD Tray into program mode. The Review Program tool will appear listing the track program and the first track programmed will be highlighted in red in the Songs List window.

To start playing the program, start the disc playing as usual by either clicking the Play Control button, pressing Ctrl-P or selecting Play from Main Player's Control Menu. The direct play buttons in the Songs window are disabled while CD Tray is in program mode.

All of CD Tray's play controls can still be used. One difference is skipping to the next and previous tracks using Skip Right and Skip Left controls will cause CD Tray to skip to the next or previous track that is *programmed*. Stopping CD Tray while in program mode, will cancel program mode, and return CD Tray to continuous play mode. Program mode can also be cancelled without stopping play by selecting 'Continuous Play' from the Main Player's Tools Menu. The track program will be cancelled and tracks will be played in order.

Saving a Program

While CD Tray is in program mode, you may save the current program for this disc in the Disc Library. This is done by selecting the Save Program menu item in the Disc Menu. One program may be saved for each disc in the Disc Library. If a saved program already

exists, it will be overwritten.

Loading a Saved Program

To load a previously saved track program, select Load Program from the Disc Menu. This selection will load the saved track program and CD Tray will enter program mode. Start the track program playing as described above.

Review Program Tool

When CD Tray is in program mode, this tool lists the tracks that are currently programmed and displays current playing times for the track program.

The current track that is playing or cued is highlighted. The digital displays are real-time counters of the duration, elapsed and remaining times for the current track program. This is very useful if you make cassette tapes using your computer.

This tool appears automatically after tracks are programmed using the Track Programming tool and is non-interactive.

The dialog can be closed, if desired, by clicking the **Close** button. If it is closed, and CD Tray is still in program mode, it can be recalled by selecting the Review Program menu item in the Tools menu or by pressing the Track Programming button on the Speedbar. The menu item is only available if CD Tray is in program mode.

Saving and Recalling a Track Program

For each disc in the Disc Library, a favorite track program may be saved. This program can then be recalled and played without having to re-program CD Tray.

Saving a Program

While CD Tray is in program mode, you may save the current program for this disc in the Disc Library. This is done by selecting the Save Program menu item in the Disc Menu. One program may be saved for each disc in the Disc Library. If a saved program already exists, it will be overwritten.

Loading a Saved Program


To load a previously saved track program, select Load Program from the Disc Menu. This selection will load the saved track program and CD Tray will enter program mode. Start the track program playing as described above.

Color Configuration

You may change the component colors of CD Tray to a variety of different styles. Your favorite color schemes can also be saved and loaded at any time.

Components

You may change the CD Tray components to any of 16 different colors. The colors you select are used throughout the different CD Tray windows and dialogs. Certain secondary components use the colors chosen from the main component list. You may change the colors of:

- Player Background
- Digital Counters
-  Labels and Text
 - Song Text (Song Titles in the Songs window)
 - Song Background (Song Titles in the Songs window)
 - Current Song Highlight (The current song playing or cued in the Songs window)
 - Disc Browser Text

Setting Colors

To set the colors of the different components, follow these steps:

1. Choose the component by clicking the colored square beside that component. The arrow to the right of the colored square will point to the component whose color is currently being changed.
2. Choose the color you wish to make that player component by clicking the colored square at the top of the dialog. The colored square beside that component will also change to the color you have selected.
3. When done choosing colors, click OK.

You may use the default CD Tray colors by clicking the Default button.

Clicking Cancel will return CD Tray to the previous colors, even if you have already applied a scheme.

Previewing Chosen Colors

You may see what how component will look in the preview box at the top of the dialog. To change the colors of CD Tray without exiting the dialog, click the Apply button.

Loading and Saving Color Schemes

You may save your favorite color combinations and load them whenever you want by saving and later loading the color scheme.

To save a color scheme, click the Schemes button. In the next dialog, you are presented a list of saved schemes and a blank edit control. To save the scheme, type in a short name for the scheme in the edit control and click the Save button.

If you wish to overwrite a previously saved color scheme, click the name of the scheme in the list and click the Save button. After confirmation, you will overwrite that color scheme.

To load a previously saved color scheme, click the name of the scheme in the list and click the Load button. You will then exit back to the Colors dialog. Click OK to load the color

scheme. If the 'Apply Scheme After Loading' check box is checked the chosen color scheme will be instantly applied to CD Tray after it is loaded.

Be careful to not choose the Song Hilight and Song Background as the same color or you will not be able to tell which song is hilighted in the Songs window.

Loading and Saving Color Schemes

You may save your favorite color combinations and load them whenever you want by saving and later loading the color scheme.

To save the scheme, type in a short name for the scheme in the edit control and click the Save button.

If you wish to overwrite a previously saved color scheme, click the name of the scheme in the list and click the Save button. After confirmation, you will overwrite that color scheme.

To load a previously saved color scheme, click the name of the scheme in the list and click the Load button. You will then exit back to the Colors dialog. Click OK to load the color scheme. If the 'Apply Scheme After Loading' check box is checked the chosen color scheme will be instantly applied to CD Tray after it is loaded.


Be careful to not choose the Song Highlight and Song Background as the same color or you will not be able to tell which song is highlighted in the Songs window.


Volume Control

If your computer is equipped with a sound card, you may use CD Tray's volume control dialog to adjust the volume level of the CD audio output.

By default, the Volume Control dialog shows only the control for CD-ROM audio. By clicking the expand button, you are presented a control for every auxiliary output device (AUX) on your computer system. Usually these other devices, correspond to the master volume control or possibly a microphone input. CD Tray does not know which control is for which auxiliary device; it usually varies for different types of sound cards. To get more information on your system's auxiliary devices, use the [Device Info](#) dialog.

To change the volume level, scroll the appropriate scroll bar up or down.

To expand the dialog, click the expand button. 

To contract, the dialog to the default size click the contract button. 

To mute (or Un-Mute) the volume, click the Mute (Un-Mute) button.

Device Info

This dialog displays a list of Auxiliary (AUX) devices on your computer and other information about each device. This dialog is purely informational and can only be displayed if your computer has a sound card installed.

Control for auxiliary audio devices is provided by a software controlled audio mixer. The mixer can reside on the motherboard of a multimedia computer, or it can be on an add-on sound card.

Auxiliary Audio Definition:

A set of multimedia functions used to control the audio mixer of MPC-compatible, sound adapter cards. The term is also used to describe audio devices whose output may be mixed with WaveAudio or MIDI audio outputs to form a composite sound source.

Fast Forward / Rewind / Cueing Tool

This tool allows full control of Fast Forward, Rewind and Cueing operations for CD Tray. The current track that is playing or cued is the target of its operations. This tool can be executed at any time except when CD Tray is in program mode and may be left on the screen while executing other CD Tray functions.



This button on the Speedbar can also be used to execute this tool.

Dialog Appearance

The current song title is displayed at the top of the dialog. This is the song that will be controlled by this tool. If the song changes while this tool is displayed, it will detect the change and update itself accordingly. The current position of the scroll bar's thumb, relative to the length of the current track, is displayed above the scroll bar. The length of the track is displayed to the right of the scroll bar.

Using the Tool

The scroll bar controls the Fast Forward, Rewind and Cueing operations. Clicking on the scroll bar increments the position of the read mechanism of the CD-ROM drive to that position of the current track. The track position indicator gives a readout in minutes and seconds of the relative position of the scroll bar thumb to track time as the scroll bar thumb moves.

Time Increments

Clicking and releasing the left mouse button on the scroll bar will increment / decrement the current playing position by 10 seconds. Clicking the arrows at either end of the scroll bar increments / decrements by 1 second. You may also drag the scroll bar thumb to increment / decrement in larger amounts.

Clicking and holding the mouse button down on the scroll bar will scroll the tool in multiple increments. The track time indicator will also increase / decrease indicating the position the scroll bar's thumb in relation to the track position. After positioning the thumb, release the mouse button and the song will be fast forwarded, rewound or cued to that position.

Operation

When CD Tray is playing, this tool controls Fast Forwarding and Rewinding. CD Tray will skip to the position indicated by the scroll bar's thumb and time counter and continue to play from that position.

If CD Tray is stopped, Cueing is performed. After positioning the scroll bar's thumb to the position desired, clicking the Play Control will start CD Tray playing from the position indicated by the track time indicator.

You may leave this tool in view on the screen and still have access to the controls, menus, etc. of CD Tray. By leaving this tool in view while CD Tray is playing you can watch the thumb move automatically to the relative position of the current track that CD Tray is playing. The track indicators will also change if the track changes while this tool is present.

Keep in mind that this tool works for the current track that is playing or is next to play (cued). You may use CD Tray's Skip Right and Skip Left controls to move to a different track if desired.

Segment Play Tool

This tool allows a small segment of the current track to be selected and played. A selection, in this sense, means selecting a starting position from the current track and then selecting an ending position. CD Tray will play the segment from start to finish and then stop.



This button on the Speedbar can also be used to execute this tool.

This tool can only be selected if CD Tray is stopped and is not in program mode.

Purpose

The primary purpose of this tool is to control play while recording Windows .WAV files, though playing segments of certain tracks can be mildly entertaining.

Track Selection

Select the track you wish to play segments from prior to starting the Segment Play tool using the controls on CD Tray. To play segments from a different track, click the Next Track or Previous Track buttons.

Dialog Appearance

The top scroll bar controls the starting position of the segment to be played. The bottom scroll bar controls the ending position of the segment to be played. The relative position of the current track in minutes and seconds is displayed above each scroll bar.

Using the Tool

Using the tool is easy. First choose a segment of the current track to be played. Do this by moving the top scroll bar's thumb to select the segment start position and move the bottom scroll bar's thumb to select the segment ending position.

After selecting the segment to be played, press the **Go** button to begin play. You may press the **Go** button as many times as you wish to play the segment.

While the segment is playing, you may press the **Stop** button to stop playing the track segment.

After pressing the **Go** button, the scroll bar thumb indicating the starting position will move forward and the starting time indicator will increment until the stop position is reached. When the thumb for the starting position reaches the position of the thumb for the ending position, play will stop and the scroll bar and time indicator for the starting position will return to the position previously selected.

Note: The starting position is inclusive and the ending position is exclusive. This means that when a segment is selected, play will start exactly at the start time and will play up to the stop time position.

Restrictions

Both scroll bars will not allow movement of its thumb into an invalid part of the scroll bar. In other words, moving the scroll bar's thumb that controls the end of the segment to a position that is previous to the beginning of the segment is not allowed and the scroll bar will not allow that movement. In addition, the scroll bars will not respond to mouse clicks while the selected segment is currently playing.

While this dialog is in view on the screen, access to the controls, menus, etc. of CD Tray will

not be available. However, you can switch to other applications using the mouse or by pressing the Windows Alt-Tab combination.

Speed Bar

The Speedbar is provided for quick execution for CD Tray functions that are used often. The two shrunk players also have some of these buttons.



Click a button for a description of that button.

Depending on the state of CD Tray, these buttons will sometimes be disabled. When disabled, the buttons are dimmed.

By keeping the mouse cursor over the button for a second, a button tip will be displayed presenting help on the button's function. These tips can be turned off via the Options menu.

Elapsed Disc Time Graph

This is a bar graph, sometimes called a thermometer, which indicates the percentage of elapsed time (0% to 100%) that has played for the entire compact disc. The graph fills itself with color as the percentage of time played increases. The graph always indicates the percentage, even if CD Tray is stopped, to indicate positioning for cued tracks.

Elapsed Disc Time Graph



This is a bar graph, sometimes called a thermometer, which indicates the percentage of elapsed time (0% to 100%) that has played for the entire compact disc. The graph fills itself with color as the percentage of time played increases. The graph always indicates the percentage, even if CD Tray is stopped, to indicate positioning for cued tracks.

Disc Library Button

This button provides access to the Disc Library. Clicking this button will switch the current window to the Disc Library Browsing window.

This button will be in one of two states:



Disc Library is closed and ready to be opened.



The Disc Library is currently open and the Disc Library Browsing window is the current window. This button is effectively disabled at this point and you may click the Songs Button to return to the Songs window or alternatively return to a graphics window by selecting it from the menu.

Songs Button

This button provides access to the Songs window. Clicking this button will switch the current window to the Songs window.

This button will be in one of three states:



The Songs window is not the current window, but is available because a disc is in the CD-ROM drive.



The Songs window is the current window.



Disabled. The Songs window is not available because there is no disc in the CD-ROM drive..

Track Programming Button



This button executes the Track Programming tool.

Fast Forward / Rewind / Cueing Button



This button executes the Fast Forward / Rewind / Cueing tool.

Segment Play Button



This button executes the Segment Play tool.

Volume Control Button



Clicking this button executes CD Tray's Volume Control dialog.

Your computer must be equipped with a sound card for the volume control to operate. If CD Tray does not detect a sound card, this button will be disabled.

Also, you must have a statement in your SYSTEM.INI file that loads the AUX device driver before the volume control will be operable. The line should read something like:

```
[mci]  
Aux=<'name of the driver'.drv>
```

Mixer Button



This button executes a mixer program normally supplied with computer sound cards. This button must be configured with the name of the program that will be executed when this button is clicked.

Recorder Button



This button executes a sound recorder program used to record Windows .WAV files. One such recorder, supplied with Windows, is the Windows Sound Recorder (SOUNDREC.EXE).

This button must be configured with the name of the program that will be executed when this button is clicked.

Shrink Buttons

These buttons provide a quick means of switching to one of the shrunk players. When clicked, CD Tray will switch from the Main Player to the shrunk player chosen as follows:



Shrink to the Face Plate player



Shrink to the Button Bar player

Power Button



Exit CD Tray. Clicking this button will close CD Tray immediately.

When exiting CD Tray, if a disc is currently playing, you will be prompted whether to continue to play the disc. If CD Tray is in program mode you will be prompted whether to actually exit and discontinue the current track program.

Mixer and Recorder Execution

Most computer systems which have a CD-ROM drive installed, also have a sound board and external speakers. To fully appreciate CD Tray and digital audio, this is a necessity. Most sound boards also provide software programs to control the volume of the sound board's output. These programs are commonly called "Mixer" programs since they allow not only control of CD audio but also other analog sound sources. CD Tray permits execution of such programs from CD Tray itself.

CD Tray provides a button on the Speedbar, designated the Mixer button from which a sound card mixer program may be executed. Of course, the program could be executed normally, such as through the Windows Program Manager, but having the volume button on the Speedbar is much more convenient.

Also provided on the Speedbar is a button designated the Recorder button. This button works like the Volume button and is reserved for a program which records Windows .WAV audio files. One such program, the Sound Recorder comes with Windows. The Segment Play tool is designed to work along with a recorder by playing disc passages or segments.

The Mixer and Recorder buttons on the Speedbar are configured by selecting Configure Mixer Button or Configure Recorder Button on the CD Tray Main player's Options menu.

Type the full path and program name of the executable program you wish to be executed when the Mixer (or Recorder) button is clicked. Alternately, you may click the **Browse** button. This will present a file dialog that can be used to browse through the directories of your hard disk to find the executable (.EXE) file. Browsing for the program is easier than trying to remember the complete path to the program which you might get wrong.

CD Tray can also execute other external programs by adding the programs to CD Tray's Tools menu.

See Also
Volume Control

Executing Other Programs From CD Tray

CD Tray provides the convenience of running other external programs from CD Tray without leaving CD Tray. This allows CD Tray to be configured as a host to all of your multimedia programs or any other programs you wish to have handy while using CD Tray.

Two buttons are provided on the Speedbar to execute a Mixer program and a Windows .WAV file Recorder program. You also may add and delete other programs on CD Tray's Tools menu.

Keyboard Play Control

You may control the playing function of CD Tray using the following hot-keys:

- Ctrl-P --> Play
- Ctrl-S --> Stop
- Ctrl-U --> Pause
- Ctrl-M --> Resume
- Ctrl-V --> Skip to Previous Track
- Ctrl-X --> Skip to Next Track
- Ctrl-J --> Eject disc from the CD-ROM drive

These keys work with all three CD Tray players.

Additionally,

- Ctrl-D --> Save Current Disc Information into [Disc Library](#)

Shrink Options

From this dialog you may set certain options for the two shrunk players, the Face Plate and the Button Bar. You may optionally proceed with switching to one of the players after setting the options.

For the Face Plate player, you may toggle the "Always On Top" status of the player.

For the Button Bar player, you also may toggle "Always On Top". You also may choose between having the Button Bar be displayed vertically or horizontally.

After setting the options, click **OK** to save the settings. Optionally, choose **Shrink Now** to proceed with switching to the shrunk player. The player is chosen by selecting it from the radio controls in the box labeled 'Shrink To...".

The last settings of these options are preserved in CDTRAY.INI so that they are re-set each time CD Tray is executed.

The window coordinates of the shrunk players are saved so that the players show up at the same location on the Windows desktop each time CD Tray is run.

Graphics Windows

These windows are for show only and just might make listening to music at your computer a little more relaxing.

Using The Disc Library



- [The Disc Library Browsing Window](#)
- [Editing Discs](#)
- [Sorting](#)
- [Filtering](#)
- [Text Search](#)
- [Disc Library Information](#)
- [Quick Song List](#)
- [Printing](#)
- [Print Preview](#)
- [Importing and Exporting](#)

Quick Song List

The Disc Library Browsing window displays a quick list of the songs for a particular disc by **clicking the right mouse button** on a listed disc. This is helpful for quickly locating a song on a particular disc. To close the Quick Song List, simply click on the list again with either the left or right mouse button.

Disc Library Browsing Window

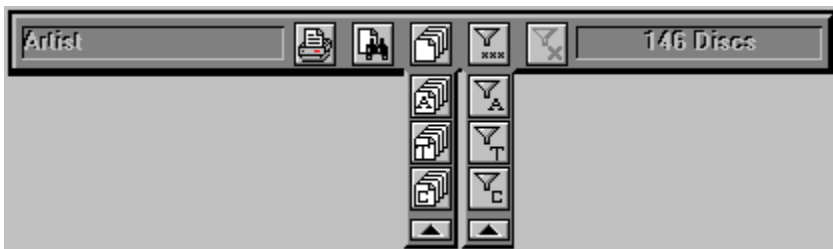
In this window, you may browse the compact discs that are in the Disc Library. You may also edit the information contained in each record by double-clicking the disc you wish to edit.

Moving Around

Scroll bars are provided to scroll the window vertically to discs not shown and horizontally to reveal other fields in the compact disc record. You may also use the **Up/Down**, **Right/Left arrows** and **PgUp/PgDown** to scroll this window. Note that pressing the Ctrl key while pressing one of the above keys will scroll the window in larger increments. Press **Ctrl-Home/Ctrl-End** to move to the first or last record, respectively.

Performing Database Functions

When this window is active, the Library Menu is enabled permitting access to CD Tray's database functions. To perform database functions such as sorting, searching, filtering etc., choose the function by selecting it from the Library Menu or click the appropriate button from the Disc Library Speedbar. For a quicker way of executing certain database functions and to display important database information while browsing your library, use the Speedbar shown below.



Click a component for more information

Editing a Disc's Information

Double click with the mouse on a compact disc record entry to enable the Disc Edit dialog for that disc. This dialog allows editing of the information or deletion of individual compact discs.

Display a Quick List of Songs

Click on a listed Disc with the right mouse button to quickly display a list of the songs for that disc. To close the list, click the list again with either the left or right mouse button.

Change Display Fonts

You may change the font that is used to display the discs by selecting the Browser>Fonts menu item from the Library menu.

Change Column Widths

You may wish to change the column widths for the various display fields in the this window. To do so, place your mouse cursor at the end of the field you wish to change. The mouse cursor will change from the normal arrow cursor to a sizing cursor. Click and hold down the left mouse button and drag the column to the desired width. Note that there is a minimum and a maximum width for each column. Also, changing the font will reset the column widths to their default settings. You may also reset the column widths to the defaults by choosing the Browser>Default Column Widths menu item from the Library menu.

Colors

You may change the background and text colors for this window by selecting the desired

color combinations in the Color Configuration dialog.

Displays the field type definition that your mouse cursor is currently move over.

Executes the Text Search dialog

Executes the Print dialog.

Extends the Sorting Popup bar (currently shown extended)

Extends the Filtering Popup bar (currently shown extended)

Sort the discs by Artist

Sort the discs by Title

Sort the discs by Music Category

Closes this popup bar

Filter the disc by a chosen Artist

Filter the discs by a chosen Title

Filter the discs by a chosen Music Category

Cancel the current Filter.

The button is disabled if no filtering is active.

Displays the number of discs in the Disc Library or
if Filtering is active, the number of Filtered discs currently shown

Editing Discs in the Disc Library

After a disc is saved to the Disc Library, it may later be recalled and edited. While the disc to be edited is displayed in the Disc Library Browsing window, **double-click** on the disc to execute the Disc Edit dialog.

The Disc Edit dialog provides a means to edit the different fields of a compact disc record in the Disc Library. This dialog is designed to allow entry of a lot of information with a minimum of typing.

Editing Artist and Title

You may edit the Artist and Title information previously entered into the Artist / Title Window.

Editing Informational Fields

The other fields listed are strictly for your information only. You do not have to enter anything into these fields, but doing so will allow categorizing your Compact Disc Library and keeping other organizational information about each of the compact discs in your library. (Note: CD Tray uses the currency symbol listed in the International [Intl] section of WIN.INI. for display of different monetary units.

Instead of edit controls, CD Tray keeps a list of each unique entry for various fields. You choose from the list when entering this information by clicking the spin list controls. This allows for easy editing since you will probably use the same entries many times throughout the Disc Library. If you wish to enter new information for a particular field, click the **New** button beside that corresponding field. This will present a dialog for entering the new information. Enter the information and click **Ok** to save. This new information will then be available to enter into other compact disc records without having to re-type the same thing over and over for each disc. If you make a mistake, click the **New** button again and enter the new information. The old information will still be listed but the next time CD Tray is started the old mistakenly entered information will not be listed. Other entries use similar or completely different input methods - but all easy to use. For example, to enter the date of purchase, clicking the Date button presents a calendar to choose the date instead of typing it.

The Catalog and Collection Numbers must be manually edited and have been added to the disc record because of requests from previous users of CD Tray. The Catalog number is generally used to input the manufacturers' disc number or bar-code number. This number is usually found on the back of the disc. The Collection number is a number you can use as you see fit to further organize your disc library. As an example, you might wish to use this field to input the shelf or box number where the disc is physically stored.

The Description field is also a manual edit field where you can type a comment or description for each disc.

Rating A Disc

CD Tray employs a simple rating system so you may rate each disc in your library. You rate each disc on three different factors ranging from 1 to 100. The three factors used in rating are:

- Sound Quality
- Performance
- Industry Impact

The average of all three ratings is used as the disc's overall rating.

Editing Song Titles

Also, in this dialog is a list box with the song titles for this compact disc. Each song title is preceded with the length of the track. Click on the song title. This will present a dialog to edit the song title. Enter the information and click **Ok** to save.

Saving Information

After editing any of the compact disc record's information, click the **Save** button to save or click **Cancel** to discard the edits.

Note: Pressing **Ctrl-D** here **does not** save the record shown in this dialog. You must click the Save button to save this information. Ctrl-D only saves the information for the disc currently loaded into the CD-ROM drive.

Deleting a Compact Disc Record

If you wish to delete this compact disc from the Disc Library, click the **Delete** button. After confirmation, the disc will be deleted.

Notes

This dialog may also be executed from the Disc Library Search dialog by selecting the disc after a search has been completed.

Only the Artist name is required to save a disc. If you are in a hurry, just enter the Artist name in the Artist / Title window, save the disc, and later recall and edit the disc's information as described above.

This program cannot save discs into the Disc Library without first inserting the disc into the CD-ROM drive. Information vital to the operation of CD Tray must be read from the compact disc and cannot be entered manually.

Non-audio CD-ROM compact discs may not be saved by CD Tray.

Sorting the Disc Library

You may alternate the order in which the discs are displayed in the Browsing window by selecting the sort order from the Library Menu.

The order specifies the field that controls the alphabetic order that compact disc records will be listed in. For example, sorting by Artist might make **A**lan Parsons Project the first record and **Z**Z Top the last.

More importantly, after assigning categories to the discs in the Disc Library, sorting by Category will list the disc records in the order such that all discs within the same category will be shown listed together. For example, all discs in the category 'Alternative' would be listed first. Note that CD Tray automatically employs secondary keys so that within a sorted category, the discs are secondarily sorted by Artist, then Title.

Almost every field in a Disc Library record can be sorted upon which greatly enhances finding certain discs, artists and titles.

The fields that can be sorted are:

- Artist
- Title
- Music Category
- Catalog Number
- Collection Number
- Release Label
- Purchase Date
- Release Year
- Rating

The Disc Browsing window may also be Filtered while sorting.

Filter the Disc Library

CD Tray permits filtering the Disc Library window so that only a list of the disc records you wish to see will be displayed. You may filter by Artist, Title of the Disc, or Category of Music.

Probably the most useful filter is filtering by Category of Music. In this dialog you are presented a list from which you may choose a category to filter the Disc Library. The list will contain every unique music category you have entered for discs in the Disc Library. Choose one of these categories and only those records whose music category field matches the filter you selected will be listed in the Disc Library Browsing window. Select **<All Categories>** to display all records. Select **<No Category>** to display records whose category is blank.

Filtering by Artist works the same as above, while filtering by Title requires you to type in all or part of the Title(s) you wish to view.

The Browsing window may also be Sorted while filtering and you may print only those records that are filtered when printing.

Searching for Text in the Disc Library

The Disc Library Search dialog provides a convenient means of searching for text within the records of the Disc Library. It also provides an alternate means to edit discs in the library.

Entering Search Criteria

The text to search for can be in any of three fields: The Artist, Title and Song. Searching for text in the Song field, of course, searches all songs on each disc. You can enter as much or as little text as you desire to search for. The more text that is entered to search for, the more narrow the search criteria. This results in fewer found discs.

Search Examples

Entering 'zep' in the Artist field will find all Led Zeppelin discs.

Entering 'zep' in the Artist field *and* 'holy' in the Title Field will find only Led Zeppelin, Houses of the Holy.

Now, also adding 'ocean' to the Song field will find Led Zeppelin, Houses of the Holy, 08 - The Ocean.

In the graphic example shown above, 'bea' is entered for the Artist field and 'love' is entered for the Song field. This search found all Beatles discs with 'love' in the song title. Of course, if the Beach Boys were in the Disc Library they also would be listed, provided they have a song with the text 'love' in the title.

Wildcard Searches

You may also use the wild card character, '*' (asterisk), to indicate that anything matches this field. An example would be to put a '*' in the Artist field. Searching would list all the discs in the Disc Library since any Artist's name matches the wild card character. The wild card character must be used alone and cannot be imbedded in text unless you are actually searching for the * symbol. You may use the wildcard character in any of the three searchable fields.

When entering search criteria, remember that the text being searched for will match that same text *anywhere* within the corresponding field of the disc record being searched.

Starting the Search

After entering the Search Criteria as explained above, click the Search button or press Return to start the search.

Search Results

After a search is performed, the large output box will display the discs found matching the criteria (if any were found at all) and the Search Results messages will display the number of discs and/or songs that were found matching the given search criteria.

Searching Again

To perform another search, click the Clear button. This clears all Search Criteria input fields as well as the Search Result output list box. Alternately, clearing all the input fields by deleting or backspacing over the characters will also clear the dialog for the next search.

Editing Discs Found in the Search

As an alternate means of editing discs in the Disc Library, the Disc Edit dialog may be invoked from this dialog. After a search is performed, clicking on the Artist / Title line in the output box will execute the Disc Edit dialog so that the disc may be edited. Clicking song titles has no effect since they are edited via the Disc Edit dialog.

Disc Library Information

This dialog presents a statistics summary of various information about the Disc Library.

For even more information about your Disc Library, click the **More Information...** button.

For a summary of the music categories that have been defined for the discs in the Disc Library, click the **Graph...** button. This will display a pie graph of the different categories as well as listing how many discs are assigned to each category. The graph is limited to 64 categories.

Printing the Disc Library

This dialog is used to control printing compact disc records from the Compact Disc Library.

Choosing Options

Various options are allowed when printing.

CD Tray provides various printed output formats which you may choose from the list of Formats. Note that the registered version of CD Tray includes more print formats to choose from.

You may choose the sorted order for the discs as they are printed. The default is sorted by the sort order currently used in the Disc Library browsing window.

If you are currently using a Filter in the Disc Library browsing window, the Apply Current Filter will be checked. Leave this as checked to print only those disc records that are in the Filter criteria. You may uncheck the checkbox to print all of the disc records.

Use the check boxes to control the printing of certain information. When checked, the information will print. When not checked, that information will not be printed.

Header Text

Optionally, you may enter a Header into the Header edit control. This text will be printed at the top of each page of output.

Footer Text

Optionally, you may print as a footer Page Numbers and Today's Date.

Printer Setup

To set options specific to your printer, click the **Setup** button.

Print Preview

To see a true rendering of how your printed report will look before printing click the Preview button.

Font

You may change the font that is used in the printed report by clicking Font button. Take care to not use too large of a font size or some text may be cut off of your report depending on the format being used.

Starting the Printout

After setting any of these options, click the **OK** button to start printing. Another dialog will then appear that will allow you to choose the printer you wish to use and the number of copies to print. You may also use this dialog to choose to print only a certain range of pages. After printing starts, an abort print dialog will appear that allows cancelling the printout.

Print Preview

The Print Preview window displays a true rendering of how your printed Disc Library report will look when printed on your printer. What You See Is What You Get (WYSIWYG)! The report will appear in accordance with the report format that is chosen from the Print dialog. In addition the report is formatted according to the selected font and the different printing options.

To change the printed font, click the Font button and choose the desired font. Choosing a Windows' TrueType font will generally create a more accurate display of the report.

You may page through the different pages of the report by clicking the left and right arrow buttons at the top of the window. After you are satisfied with the appearance of the report, click the Print button to start printing.

Importing and Exporting the Disc Library

CD Tray provides a separate utility for importing and exporting Disc Library records to Dbase and ASCII Text files. Using this utility, your library can be shared with other users of CD Tray and vice-versa. Also, Dbase files can be read into many other computer programs for use in other ways.

Note: This utility is only included with the registered version of CD Tray.

CD-ROM Setup for CD Audio in Windows

Before CD Tray will play audio compact discs you must install and setup your computer system and configure Windows for multimedia. You should install your CD-ROM drive according to the manufacturer's instructions. Other software drivers are also necessary to be installed for CD Audio support in Windows as discussed below.

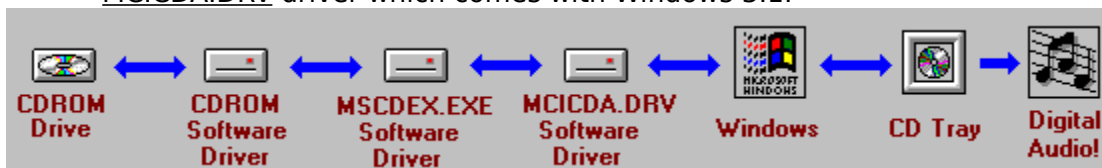
Why the need for software drivers?

Drivers make device independence possible for Windows applications, providing the hardware-specific interface between the physical devices and the Windows operating system. Sometimes software drivers are known as device drivers for this reason..

Installing CD Audio drivers

CD Audio is accomplished in Windows through the interaction of three software drivers:

- The CD-ROM device driver from the CD-ROM drive manufacturer.
- MSCDEX.EXE device driver from the CD-ROM drive manufacturer or Microsoft Corporation.
- MCICDA.DRV driver which comes with Windows 3.1.



You should always try to ensure that you have the latest version of the above drivers by contacting the manufacturer of your CD-ROM drive or Microsoft Corporation.

All three drivers must be installed and configured correctly for CD Audio support. When Windows Setup is run, it checks for the presence of MSCDEX.EXE in memory. If it is found, it creates an entry for MCICDA.DRV in your SYSTEM INI file. **However, it DOES NOT install the driver!** This must be done after the installation is completed through the Windows Control Panel. Here are the steps to add the drivers to your system:

1. Add the CD-ROM device driver entry (which came with your CD-ROM drive) into the CONFIG.SYS startup file. Consult your CD-ROM drive's documentation for this.
2. Add MSCDEX.EXE (Microsoft CD-ROM Extensions) into the AUTOEXEC.BAT startup file.
3. Ensure the above drivers are configured properly according to the supplied documentation for each driver.
4. Start the Windows Control Panel and choose the Drivers Icon. (Show Me...)
5. Press the ADD button in the Drivers section of the Control Panel.
6. Select the "[MCI] CD Audio" entry and press the OK button. If prompted, insert the appropriate Windows distribution disc requested and follow the instructions.
7. Restart windows. You should now be able to run CD Tray to play audio compact discs.

Troubleshooting

If you experience trouble playing audio try these steps:

- Check for the presence of the CDAudio entry in SYSTEM.INI by:
 1. Using the Windows' Notepad application, load the SYSTEM.INI file.
 2. Locate the [MCI] section.
 3. There should be an entry: "CDAudio=mcicda.driv". If there is not, add it.
 4. Save the SYSTEM.INI file and exit Notepad.
 5. Restart Windows.
- Ensure that the file MCICDA.DRV is in your WINDOWS\SYSTEM directory.
- Ensure that the file MMSYSTEM.DLL is in your WINDOWS\SYSTEM directory.
- Ensure no other programs are using the CD Audio device driver at the same time. CD Tray cannot open the device while it is being used by another program.
- Insert an audio compact disc into the CD-ROM drive BEFORE starting CD Tray
- Clean the compact discs being played and clean the lens pickup system on the CD-ROM drive. Dirty discs and a dirty lens can cause a compact disc to skip while playing songs, reset the drive, or not play a disc at all. In order to clean a CD-ROM drive, a CD cleaning disc should be purchased and used regularly.
- If using a sound card in your system, make sure that the CD Audio output volume is NOT in Record mode and is turned up sufficiently to hear audio through the speakers.

If you also experience problems with other programs which use the CD-ROM drive try these steps:

- Consult the documentation for MSCDEX.EXE and the CD-ROM device driver for proper installation.
- Strip CONFIG.SYS and AUTOEXEC.BAT of all but the necessary drivers and restart your computer. Also, if loading these drivers into the high memory area, try loading them normally into the first 640K of RAM.
- Consult with your CD-ROM drive manufacturer to obtain the most recent versions of the software drivers.

Miscellaneous Information



- [Back Up Your Compact Disc Library!](#)
- [Rebuilding the Disc Library Index](#)
- [Moving the Disc Library Files](#)
- [CD Tray Required Files](#)
- [Converting Disc Library Files for CD Tray Version 3.03](#)
- [Technical Support](#)
- [Problem Reporting](#)
- [Shareware License](#)
- [Disclaimer](#)

Back Up Your CD Library!

It is a good idea to make frequent backups of your Compact Disc Library. The database is kept in two files, CDTRAY.DAT and CDTRAY.IXC.

You should back up the database to a floppy disc or other medium. At the very least, keep a duplicate copy of your database somewhere on your hard disc. Also keeping an up to date exported text file of your database is a good idea.

Since the CD Tray Disc Library must be built by inserting each compact disc into the CD-ROM drive, re-creating a lost database could take quite a while to accomplish. **Backups are important!**

See Also

[Rebuilding the Disc Library Index](#)

[Moving the Disc Library Files](#)

Rebuilding the Disc Library Index

CD Tray uses an ISAM (Indexed Sequential Access Method) file system to store discs in the Disc Library. This means that for each record in the database, one or more index keys can be stored in an ISAM index file. These indexes facilitate very fast location of a particular record in the data file. The structure holding all of the indexes can, with use, become corrupted. This is the time to rebuild the index using each record in the data file. An index can be completely rebuilt from the data records since the indexes are built using the fields in the record.

The Disc Library index can also become corrupted if you turn off or reboot your computer system while the Disc Library database files are open. (The database files are open only when CD Tray first scans a disc and when the Disc Library Browsing window is the current window.) Parts of the database files reside in computer memory while the files are open and pulling the plug can lose information or make it unusable. Database file problems for ISAM files usually can be corrected by rebuilding the index file. However, the best defense against lost data is to make frequent backups.

Rebuild the Disc Library index by choosing the Rebuild Library Index menu item on the Options menu.

You may never have rebuild the Disc Library index file. This feature is for problem solving only - use only if CD Tray has trouble accessing the Disc Library. CD Tray will automatically rebuild the index at program start if it detects a problem.

Note: Before rebuilding the index, CD Tray makes backup copies of the Disc Library files to the filenames: _CDTRAY.DAT and _CDTRAY.IXC. Make sure you have enough hard disk space before to accomodate the files before rebuilding the index file.

Moving the Disc Library Files

If you wish to move the CD Tray Disc Library files to another directory on your hard disk, it is extremely important that you also let CD Tray know where the files are. This is controlled by the DbDirectory='Directory Name' in the CDTRAY.INI file. The Disc Library files are:

- CDTRAY.DAT
- CDTRAY.IXC

These files must remain together in the same directory on your hard disk. The CDTRAY.INI file will be located in your WINDOWS directory which is normally C:\WINDOWS. CDTRAY.INI can be edited with any text editing program such as Windows' NOTEPAD program.

FOR EXAMPLE:

If you installed CD Tray into the directory C:\CDTRAY then the entry will read:

```
DbDirectory=C:\CDTRAY
```

Later if you decide to move CD Tray and/or the Disc Library files to C:\MMEDIA\CDTRAY then the DbDirectory entry must be edited as well to read:

```
DbDirectory=C:\MMEDIA\CDTRAY
```

See Also

[CD Tray Required Files](#)

CD Tray Required Files

The following files are required for proper operation of CD Tray and must remain in the same directory as the CD Tray program:

- CDTRAY.EXE - CD Tray Executable
- CDTRAY.HLP - CD Tray Help File
- CDTCP.DLL - CD Tray Controls Dynamic Link Library (Required by all programs)
- CDTNC.DLL - CD Tray Window Dynamic Link Library (Required by CDTRAY and CDTBAR)
- CDTTIMER.DLL - CD Tray Multimedia Timer Dynamic Link Library (Required by CDTRAY)
- CTL3D.DLL - 3-D dialogs Dynamic Link Library (Required by CDTRAY) (MUST BE LOCATED IN \WINDOWS\SYSTEM directory)
- CDTF.FON - CD Tray Screen Font (Required by all programs)
- CONVCD.EXE - Utility to convert prior version Disc Library files for use with CD Tray version 3.03
- CDTBAR.EXE - CDT-Bar Program, additional Windows CD Player (Registered Users Only)
- CDTBAR.HLP - CDT-Bar Help (Registered Users Only)
- CDTLINE.EXE - CDT-Line Program, additional Windows CD Player (Registered Users Only)
- CDTLINE.HLP - CDT-Line Help (Registered Users Only)
- CDIMPEXP.EXE - CDimpexp, CD Tray Import/Export Utility (Registered Users Only)
- CDIMPEXP.HLP - CDimpexp Help (Registered Users Only)
- DBFEDIT.EXE - Dbase File Viewer/Editor (Registered Users Only)
- LICENSE.TXT - CD Tray Registered Users License Agreement
- README.TXT - CD Tray Miscellaneous Information Text File
- *.ICO - Various Icons to use when setting up CDT-Line commands.

The following files are created after CD Tray is run the first time but also should remain in the same directory as CD Tray:

- CDTRAY.DAT - Disc Library Data file
- CDTRAY.IXC - Disc Library Index file
- COLUMNS.INI - Saved Disc Library Browser Column Width Settings
- SCHEMES.INI - Saved CD Tray Color Schemes

CDimpexp will create Dbase (*.DBF) files and other Data and Index files (*.DAT, *.IXC)

The following file will reside in your WINDOWS directory:

- CDTRAY.INI - CD Tray Initialization File (Keep this file in the WINDOWS directory)

Converting Disc Library Files for CD Tray Version 3.03

CD Tray, version 3.03 has a new database format from previous versions of CD Tray. If you are a current user of CD Tray and have already created a Disc Library, your files must be converted to the new format before use with CD Tray, 3.03. CD Tray will let you know this fact the first time it is executed and you may run the conversion program at that time. The program used to convert the files is CONVCD.EXE. Your previous Disc Library information will remain intact and you will not lose any information. Just the same, your old files will be backed up before conversion is performed.

Problem Reporting

CD Tray version 3.03 has undergone quite a re-write and has many new features. Even though it has been extensively tested by JenJen Software, not all problems will have been found and resolved. If you find a problem with CD Tray, JenJen Software would REALLY like to know about it. Contact JenJen Software via [Technical Support](#) and please include a thorough description of the problem and how it can be duplicated.

Technical Support

Technical Support and problem reporting for CD Tray is provided through two means:

- By mail to JenJen Software.
- Electronically through CompuServe. (Compuserve ID# 73700,3137)

Note: Please include your phone number in case a phone call is required.

Technical Support is unlimited to licensed users of CD Tray.

Technical Support is supplied to unregistered users only if the problem affects the ability to reasonably evaluate the software.



JenJen Software
P.O. Box 1834
Chesterfield, VA 23832

Compuserve ID# 73700,3137

Shrink CD Tray's Main player to the Face Plate player.

Shrink CD Tray's Main player to the Button Bar player.

To conserve memory and Windows' resources the Songs window implements a paging scheme with each page listing up to 33 song titles. The Disc you are currently playing contains a large number of songs and the songs paging scheme is in use. Choose the page of Song Titles you wish to go to. Note, you can also choose the Songs page from the Window menu or press **Ctrl-Pgup/Ctrl-PgDn** to move from page to page.

Calendar Control

This dialog, which has the appearance of a normal Calendar, is used to easily input a date.

To select a date, click the number of the date and click OK.

To scroll through the months, click the left or right arrows on the scroll bar below the calendar.

To move to a different year click anywhere on the scroll bar below the calendar.

To go to the date for today, click the Today button. By default the current date is set when the dialog is first executed if no date is currently set.

Since this dialog is used to input the Purchase Date for a disc, it doesn't make sense to choose a date in the future even though it is allowed. Use at your own discretion as this error will not be flagged.

Rating Discs

CD Tray employs a simple rating system so you may rate each disc in your library. You rate each disc on three different factors ranging from 1 to 100. The three factors used in rating are:

- Sound Quality
- Performance
- Industry Impact

The average of all three ratings is used as the disc's overall rating.

Create Disc Library Files

The Disc Library files were not detected on your system. If you are executing CD Tray for the first time, click Yes to create the files. If not, you should check the "DbDirectory=" entry in CDTRAY.INI which specifies the location of the files on your computer and edit this entry accordingly.

See Also
[Moving Disc Library Files](#)

Registration Information

Thank you for evaluating CD Tray, version 3.03.

CD Tray is a Shareware product. Shareware is a computer program distribution/marketing method that permits potential buyers to try the program prior to purchase. It is NOT free and it is NOT in the Public Domain. You are given the right to use this program for a period of not more than 2 weeks. If, after evaluating the program, you find it to be useful enough to use it on a regular basis, you are expected to pay for it by registering with JenJen Software.

CD Tray is the sole property of JenJen Software. This shareware version may be freely copied and transferred to individual parties for evaluation purposes. It may be posted on public Bulletin Board systems (BBS) for electronic access as long as NO FEE is charged for its distribution except for private BBS operations that charge a regular user subscription fee.

This Shareware version of CD Tray may be distributed on diskette or other media by Shareware disk distributors/vendors as long as all attendant files are included. Vendors should stress the Shareware concept of payment for the program to its author after the program evaluation period.

This copy of CD Tray is fully functional except for the following:

- The Compact Disc Library is limited to 12 compact discs.
- Compact Disc playing is periodically stopped on some discs with a registration reminder.
- CD Tray will automatically stop playing when closed.

Registration (payment) is required for the fully functional version of the program.

Registration

The registration fee for CD Tray 3.03 is **\$35.00 (US Currency)**, PLUS shipping and handling.

Registration Benefits, Additional Programs...

With registration you will receive:

The fully functional commercial version of the CD Tray program and help files.

Additional Printed Report Formats included in CD Tray.

Disc Library Import/Export Utility

CDT-Bar - a bonus Windows CD Player program which complements CD Tray.

CDT-Line - a bonus command line driven Windows CD Player program.

CDimpexp - CD Tray Disc Library Import/Exporting Utility

Unlimited Technical Support.

Future Upgrade Discounts



ACCEPTED!

Payment Instructions

United States Customers

Order CD Tray directly from JenJen Software using:

- Personal Check
 - Money Order
 - Credit Card (Visa or MasterCard)
 - Cash
- Shipping and Handling is \$3.00. Virginia Residents - add 4.5% sales tax (\$1.58 per copy)

International Customers

Order CD Tray directly from JenJen Software using:

- International Money Order (marked and converted to US Dollars \$)
 - Credit Card (Visa or MasterCard)
 - Cash in US Dollars only
- Shipping and Handling is \$5.00.

Foreign bank checks cannot be accepted. Please use Air Mail to ensure prompt order fulfillment.

Please allow 5-10 working days from date of receipt for delivery of your copy of CD Tray.

[PRINT AN ORDER FORM](#)

You may send your registration order form via mail or If you are using a credit card, you may send your order form via EMAIL to:

- CompuServe ID# 73700,3137
- Internet ID 73700.3137@compuserve.com

Upgrading from a previous version of CD Tray to CD Tray version 3.03

Current registered users of an earlier release of CD Tray may upgrade to version 3.03 for \$10.00 (US Currency).

Send the order form to JenJen Software marked as UPGRADE and include your registration number which is written on your distribution diskette. *You do not need to send shipping and handling fees for an upgrade.* Please follow the above guidelines for Payment Methods.

UPGRADES MAY BE PROCESSED BY JENJEN SOFTWARE OR THE SAME AUTHORIZED CD TRAY FOREIGN DISTRIBUTOR FROM WHOM YOU ORIGINALLY PURCHASED CD TRAY.

Technical Support

After receipt of registration payment, Technical Support will be provided through two means:

- 1) By mail at the address below, or
- 2) Electronically through CompuServe: ID# 73700,3137

Note: Please include your phone number in case a phone call is required.

Technical Support is unlimited to registered users. Technical Support is supplied to unregistered users only if the problem affects the ability to reasonably evaluate the software.

All comments about this program are appreciated.

One of the great strengths of the Shareware concept is the interaction between the program author and the users. If you have a problem, questions or any suggestions for improvement, please contact JenJen Software.

Please support Shareware authors. Register your Shareware programs!

Contact JenJen Software with your comments at:

JenJen Software
P.O. Box 1834
Chesterfield, VA 23832

or leave E-Mail on CompuServe to
CompuServe ID# 73700,3137

Copyright 1993 JenJen Software, All Rights Reserved.

Print an Order Form for CD Tray

Thank you for ordering CD Tray. Please select from the list below for the proper CD Tray Order Form.

Print a CD Tray Order Form for...

[United States Customers](#)

[Customers from Germany](#)

[Customers from Netherlands & Belgium](#)

[Other International Customers](#)

NOTE:

For customers from Germany, Netherlands and Belgium:

You may also order CD Tray directly from JenJen Software by using the International Order Form.

[Upgrading from an earlier version of CD Tray](#)

CD Tray Distributors in Germany

Choose the distributor from whom you wish to register CD Tray:

Der PD-Profi - Burgheim, Germany

CDV Software - Karlsruhe, Germany

Upgrading from a previous version of CD Tray to CD Tray version 3.03

Current registered users of an earlier release of CD Tray may upgrade to version 3.03 for **\$10.00 (US Currency)**.

Send the appropriate order form to JenJen Software marked as UPGRADE and *include your registration number* which is written on your distribution diskette. *You do not need to send shipping and handling fees for an upgrade.*

Please follow the payment guidelines stated in the registration information.

ALL UPGRADES MUST BE PROCESSED BY JENJEN SOFTWARE OR BY THE SAME FOREIGN DISTRIBUTOR FROM WHOM YOU ORIGINALLY PURCHASED CD TRAY. YOU MUST INCLUDE YOUR ORIGINAL LICENSE/SERIAL NUMBER WHICH IS WRITTEN ON YOUR DISKETTE WHEN PLACING AN ORDER FOR AN UPGRADE.



CD Tray Order Form

United States Customers

Name..... _____ Date _____

Address..... _____

Phone..... _____ CompuServe or EMail ID# _____

PAYMENT METHOD

Cash	[]
Check	[]
Money Order	[]
Visa/Mastercard	[]

Credit Card Number _____ Expiration Date _____

Signature _____

CD Tray for Windows, Version 3.03	\$ [35.00]
Number of copies (Disk Format 3.5 Only)	X []

Subtotal	\$ []
plus Shipping & Handling of \$3.00	\$ []
Virginia residents 4.5% sales tax (\$1.58 per copy)	\$ []
Total Amount	\$ []

MAIL TO: *OR CREDIT CARD ORDERS ONLY EMAIL*

To:
JenJen Software
P.O. Box 1834
Chesterfield, VA 23832
JenJen Software
Compuserve ID# 73700,3137
or Internet: 73700.3137@compuserve.com

Where did you receive CD Tray? _____

Any Comments? _____



CD Tray Order Form

International Customers

Name..... _____ Date _____

Address..... _____

Phone..... _____ CompuServe or EMail ID# _____

PAYMENT METHOD
FOREIGN BANK CHECKS & MONEY ORDER NOT ACCEPTED

Cash (US Dollars) []
International Money Order (US Dollars) []
Visa/Mastercard []

Credit Card Number _____ Expiration Date _____

Signature _____

CD Tray for Windows, Version 3.03	\$ [35.00]
Number of copies (Disk Format 3.5 Only)	X []

Subtotal	\$ []
plus Shipping & Handling of \$5.00	\$ []
Total Amount	\$ []

MAIL TO: *OR CREDIT CARD ORDERS ONLY EMAIL*
To:

JenJen Software	JenJen Software
P.O. Box 1834	CompuServe ID# 73700,3137
Chesterfield, VA 23832	or Internet: 73700.3137@compuserve.com

Where did you receive CD Tray? _____

Any Comments? _____



CD Tray Registrierformular

German Customers, Der PD-Profi

**Der PD-Profi
Gerd Zottlein
SchulstraBe 13
D-86666 Burgheim
Telefonieren Sie 8432 1296
Fax 8432 8674**

Registrierung der Vollversion von CD TRAY 3.03

Anzahl der Lizenzen: ___ x 65,00 DM = ___ DM

Porto und Verpackung: 10.-

Porto und Verpackung: 15.-- (Ausland) ___ DM

Bei Nachnahme: 5.-- Postgebühren ___ DM
(Ausland nur EC, Kreditkarte)

Total: ___ DM

Zahlungsweise: ___ Scheck / Bar (bitte ankreuzen)

___ Nachnahme
___ per Lastschrift

Bank: _____

BLZ: _____

Kto: _____

___ Visa ___ Mastercard

Karteninhaber: _____

Kartenummer
(16-stellig) _____

Karte gultig bis: _____

Ihre Adresse: _____

woher stammt Ihre Sharewareversion? _____

Ort, Datum, Unterschrift: _____



CD Tray Registrierformular
German Customers, CDV Software

Registrierung der Vollversion von CD TRAY 3.03

Name..... _____

Straße..... _____

PLZ, Stadt... _____

Telefon..... _____ CompuServe ID# _____

Disketten 5.25 [] Bezahlung per... Bar []
Format 3.5 [] Scheck []
] Nachnahme [
] Kreditkarte [
]

Kreditkartennummer: _____ Ablaufdatum: _____
Karteninhaber: _____
Unterschrift: _____

CD Tray for Windows, Version 3.03.....DM [65.00]
Anzahl.....X []
]

Zwischensumme..... DM []
] zzgl. Porto/Verpackung..... DM [10.00]

Summe.....DM []
]

Bitte Einsenden an : **CDV Software**
----- **Postfach 2749**
 76014 Karlsruhe

Kommentare, Fragen, Anregungen? _____



CD Tray Order Form

Netherlands & Belgium Customers

Broco Software
Postbus 446
3760 AK SOEST
Nederland

Phone: 02155-26650
Fax: 02155-14012
Support: 02155-29596

Name..... _____ Date_____

Address..... _____

Phone..... _____ CompuServe or EMail ID# _____

PAYMENT METHOD

Eurocheque / PostCheque	[]
Bank	[]
Giro	[]
bank Belgie	[]
en EuroCard / MasterCard	[]

Credit Card Number_____ Expiration Date_____

CD Tray for Windows, Version 3.03
choose one: Netherlands: FI. [79,00] []
] Belgium Bfr. [1580] []

Shipping & Handling
choose one: bij vooruitbetaling : [FI. 10,00 / Bfr. 200] []
] onder rembours [FI. 15,00 /]
N.V.T.] []

Total Amount []
] FI. [] Bfr. []

Where did your receive CD Tray_____

Any Comments?_____

Shareware License

CD Tray is a Shareware product. As such, it is made available to the general computing public for evaluation. Users are licensed to operate CD Tray on their personal computers for the purpose of test and evaluation on a trial basis for a period of no more than two weeks. If the user decides the program is not of sufficient merit to warrant purchase through registration with JenJen Software, program use should cease and the program files should be deleted from the computer it is installed upon. Otherwise, if the program is deemed useful and is in regular use, registration with JenJen Software is required.

Registered users are those users that elect to pay for CD Tray and register that payment with JenJen Software. By virtue of registration and payment for the program, registered users are granted a license to continue to utilize the program for as long as they choose on ONE computer.

Disclaimer

JenJen Software hereby disclaims all warranties relating to CD Tray, whether it is expressed or implied, including and without limitation to any implied warranties of merchantability or fitness for a particular purpose. JenJen Software cannot and will not be liable for any special, incidental, consequential, indirect or similar damages due to the loss of data or any other reason through the use of CD Tray, even if JenJen Software or an authorized agent has been advised of the possibility of such damages. Further, in no event shall the liability for any damages ever exceed the price paid for the license to use CD Tray, regardless of the form and/or extent of the claim. The user of CD Tray bears all risk as to the quality and performance of the software.



The disc cannot be saved.

You have reached the limit for the number of discs that the Shareware version of CD Tray will store.

The Shareware version of CD Tray limited to saving 12 compact discs. The fully registered version of CD Tray can store theoretically over 2 billion discs. However, due to other program limitations, a more reasonable limit is several million discs. Note, that each disc also can store up to 99 tracks each which is the audio compact disc standard.

Please register your copy of CD Tray for the fully functional commercial CD Tray plus bonus programs and utilities.

[Print an Order Form.](#)



Please pardon this interruption of play, but this is just a reminder that CD Tray is a Shareware program and continued use requires registration from JenJen Software. This Shareware version of CD Tray interrupts play periodically on certain discs as a reminder to register.

To play this disc without interruption, exit CD Tray and restart the disc again.

[Print an Order Form.](#)

